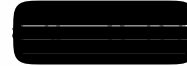


Exhibit A



## Blackjack (21)

### Object of the game:

To have a hand closer to 21 than that of the dealer without going over (busting). If players are dealt an Ace and at the same time a 10, Jack, Queen, or King on the first two cards, the player has a "Blackjack" and will win 3:2 unless the Dealer also has a "Blackjack".

**Betting:** A bet of \$2, \$4, \$6, \$8 or \$10 must be placed within the betting circle directly in front of the player. There is a posted minimum (\$2) and maximum (\$10) bet at every table, along with all rules and procedures. Players can bet up to two (2) different hands at the Blackjack table. If a player wants to play when a player is playing multiple hands, the player will be asked to forfeit a betting spot at the table. Ultimately, it is the decision of the house on how many spots a player can play.

**Dealing:** Each player at the table receives two cards, both face up, and the dealer receives one card face up and another face down. Any hand containing an ace counted as 11 is referred to as a "soft" hand; any other hand is "hard." An untied two card soft 21 (ace and 10) is called a "natural" or a "blackjack" and is paid 3:2.

**Dealer Ace:** If the dealer has an ace up card, any player with a blackjack may ask for "even money" and forfeit the 3:2 bonuses before the dealer checks for a 10 or face card in the hole. Other players may take insurance by matching up to 1/2 of their original bet in the insurance area of the table layout. If the dealer has a 10 in the hole, all bets are collected and insurance bets are paid 2:1. If the dealer does not have a ten in the hole, the dealer collects all insurance bets and play continues normally.

**Dealer Ten:** If the dealer has a ten or face cards as the up card, the hole card must be checked to verify that the dealer does not have an ace in the hole, resulting in blackjack. If the hole card is an ace, any players who also have blackjack push, and all others lose.

At this point, if the dealer does not have blackjack, any player with a blackjack receives the 3:2 payouts. Other than that, play is from the dealer's left to right, which is referred to as from first base to third base.

All players can play multiple hands at a time. No player can play more than two (2) hands per person.

The game is played with (6) or eight (8) standard decks of 52 cards. All the players' cards are dealt face up and the dealer's cards are dealt in the normal manner (one down, one up) The players' cards are dealt face up to enhance the fun of the game and allow the dealer to point out the many exciting options and bonuses.

The player may double down (for the full amount of the original wager or for ½ the wager) on the first two cards only. The player may also double down on any ten valued card and an ace (including blackjack); in which event the ace is counted as a total of one. The player receives only one card on any double down. No hitting after doubling.

The player may split up to 3 times (for the full amount of the original wager; between all equal-valued cards, NOT including aces (making up to four hands). Ace will receive one card per ace. The player may hit, double down and surrender on each split hand excluding aces.

When the Dealer is showing an Ace, and the player has blackjack, they may request to be paid even money before the dealer checks to see if they have blackjack. In the event, the Player denies even money; they may be paid 3:2, if the Dealer does not have blackjack. If the Dealer, however, does have blackjack, the Player and dealer will push with loss.

The player may place an insurance bet, even if he/she has a blackjack. The insurance bet is always a separate side bet, paying 2-to-1.

The house stands on hard 17 but will hit on soft 17.

In the event a card from the shoe is dropped on the ground, the Floor Manager would be called over. The player's whose card fell to the ground has the option to keep that card or take the next card from the shoe. If the player decides to muck that card, that card will then be discarded, and the game will continue as normal.

## Shuffling of Cards

In blackjack, we will be using 6 or 8 decks of cards. Each deck is the standard 52 card deck. Once a Blackjack table is open, the dealer will spread each deck to ensure all cards are being used. The dealer will verify all decks of cards. After each deck is verified, the dealer will wash all six decks of cards together and form one pile (or brick). The dealer will then cut the deck in half and place each half of cards to the left and right accordingly. The dealer will then cut about ½ of one deck of cards from each pile (right and left) and riffle the cards together and place them in a pile in the middle of the table. The dealer will then alternate taking a ½ deck from the right and a ½ deck from the middle pile until all cards are riffled together. The dealer will then split the pile or brick again into two separate piles. The dealer will then take ½ deck from the right and ½ deck from the left and riffle them together to form a final pile in the middle. Once the pile or brick has been shuffled again, the dealer will ask a player to cut the brick. A player has to cut at least one deck (approximately) from the front or back of the brick. Once a cut card is placed into the brick, the dealer will cut the remaining cards from the back of the brick and put.

Notes: Once a player receives a 3rd card, doubles down or splits his hand; surrendering a bet is not an option.

## Match the Dealer

To play match the dealer the player must make a wager for a standard blackjack hand and an additional wager for match the dealer prior to the start of the game. There is a separate betting circle on the felt for the match the dealer bonus. The player must bet **\$2, \$4, \$6, \$8 or \$10** on the standard blackjack hand, but can bet any amount between **\$1 and \$10** on the match the dealer bonus.

## How it works

If the player matches the dealer's up card using one or both of their first two cards they will win. The player will be paid according to the payout chart below if one or both of their cards match the dealer's up card. If the player does not match the dealer's up card the player loses the bet.

The match the dealer bonus is resolved before the player is allowed to act on their standard blackjack hand. If the player wins, the dealer will pay the player according to the payout chart and push the match the dealer bet off the betting circle. If the player loses, the dealer will take the bet before continuing with the hand. Once match the dealer is resolved the player can continue playing out their standard blackjack hand.

## Payout Chart

1 unsuited	3 to 1
1 suited	7 to 1
2 unsuited	10 to 1
1 unsuited 1 suited	14 to 1
2 suited	20 to 1